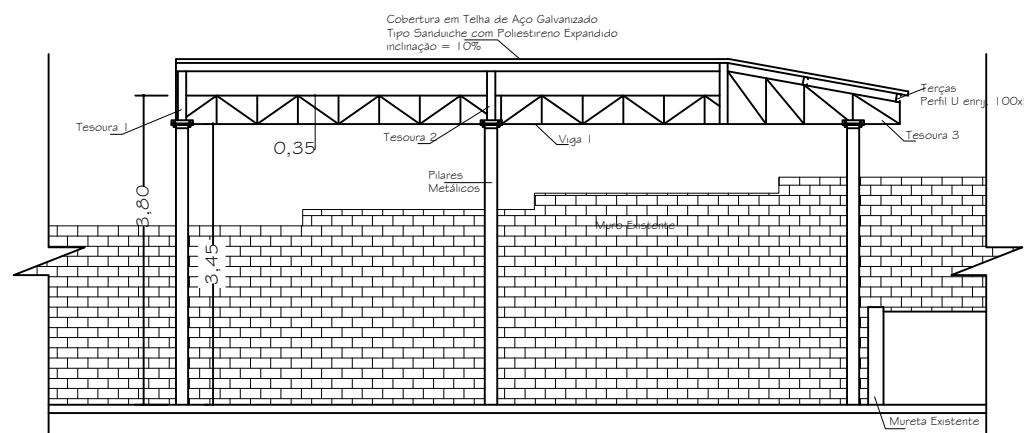
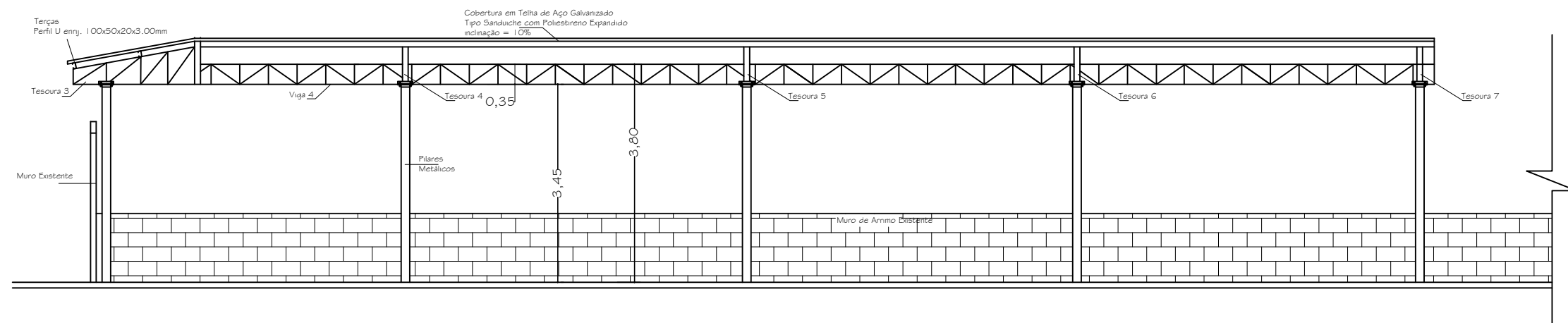


PLANTA BAIXA  
ESC. 1:100

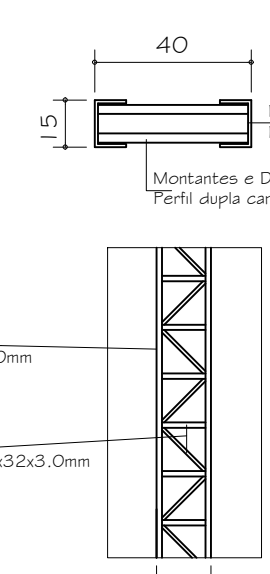


CORTE BB  
ESC. 1:100

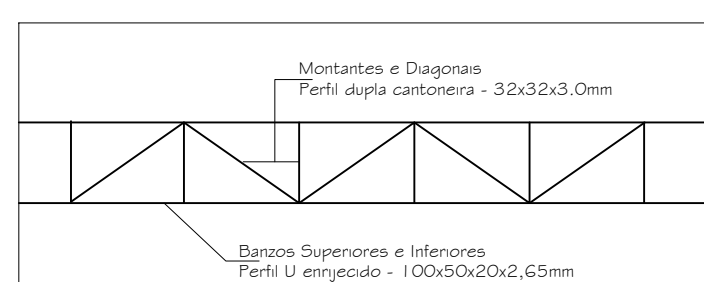


CORTE AA  
ESC. 1:100

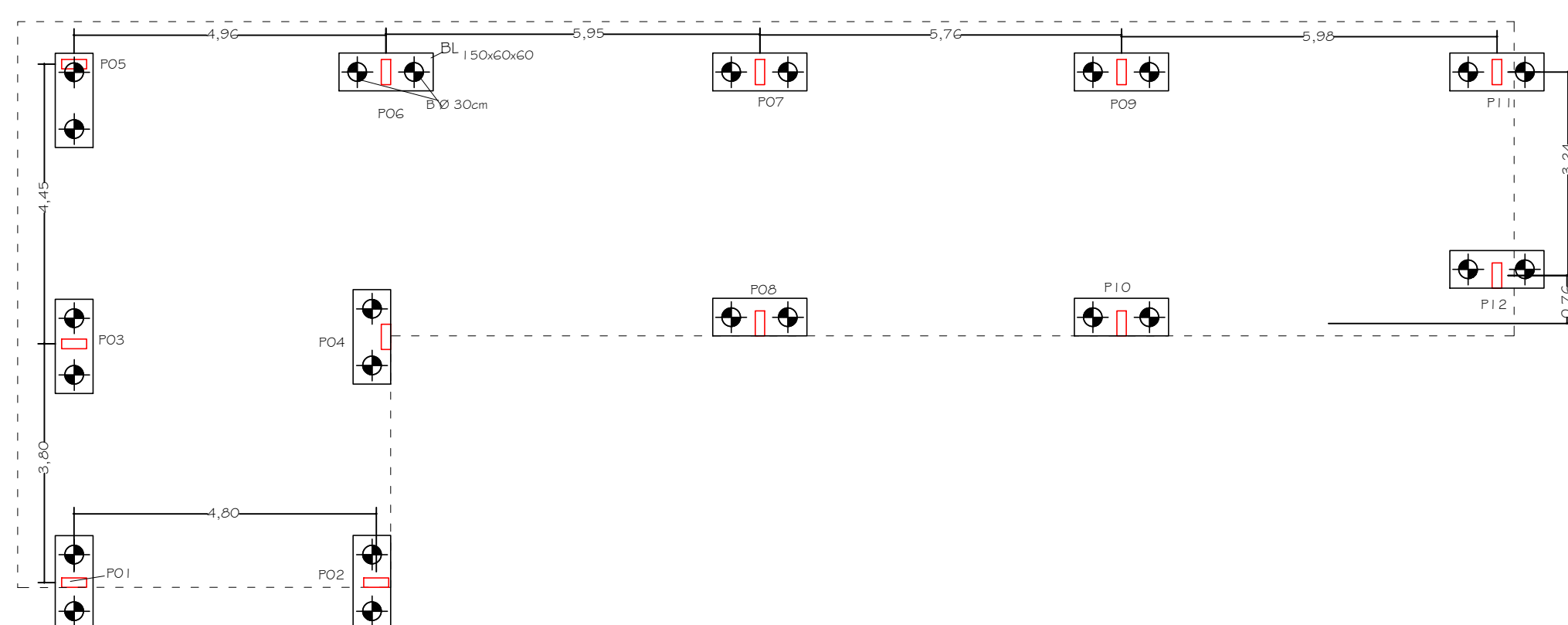
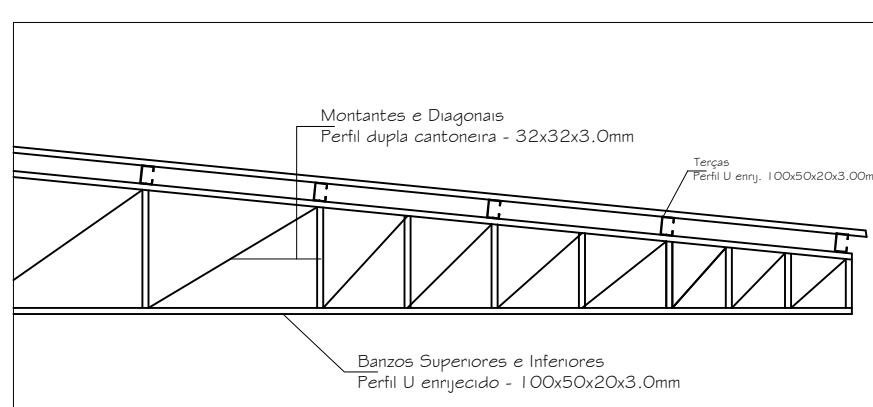
Detalhe dos Pilares  
Metálicos 15x40cm



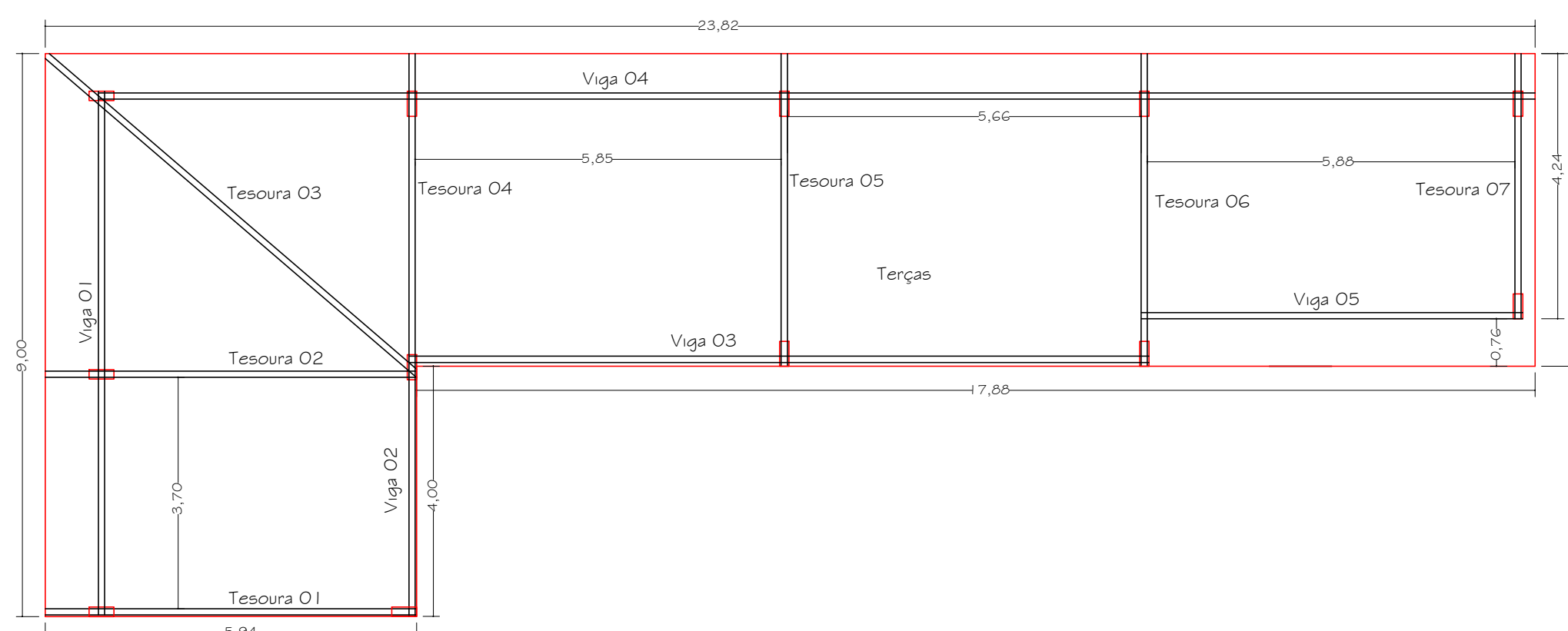
Detalhe das Vigas  
Metálicas 10x35cm



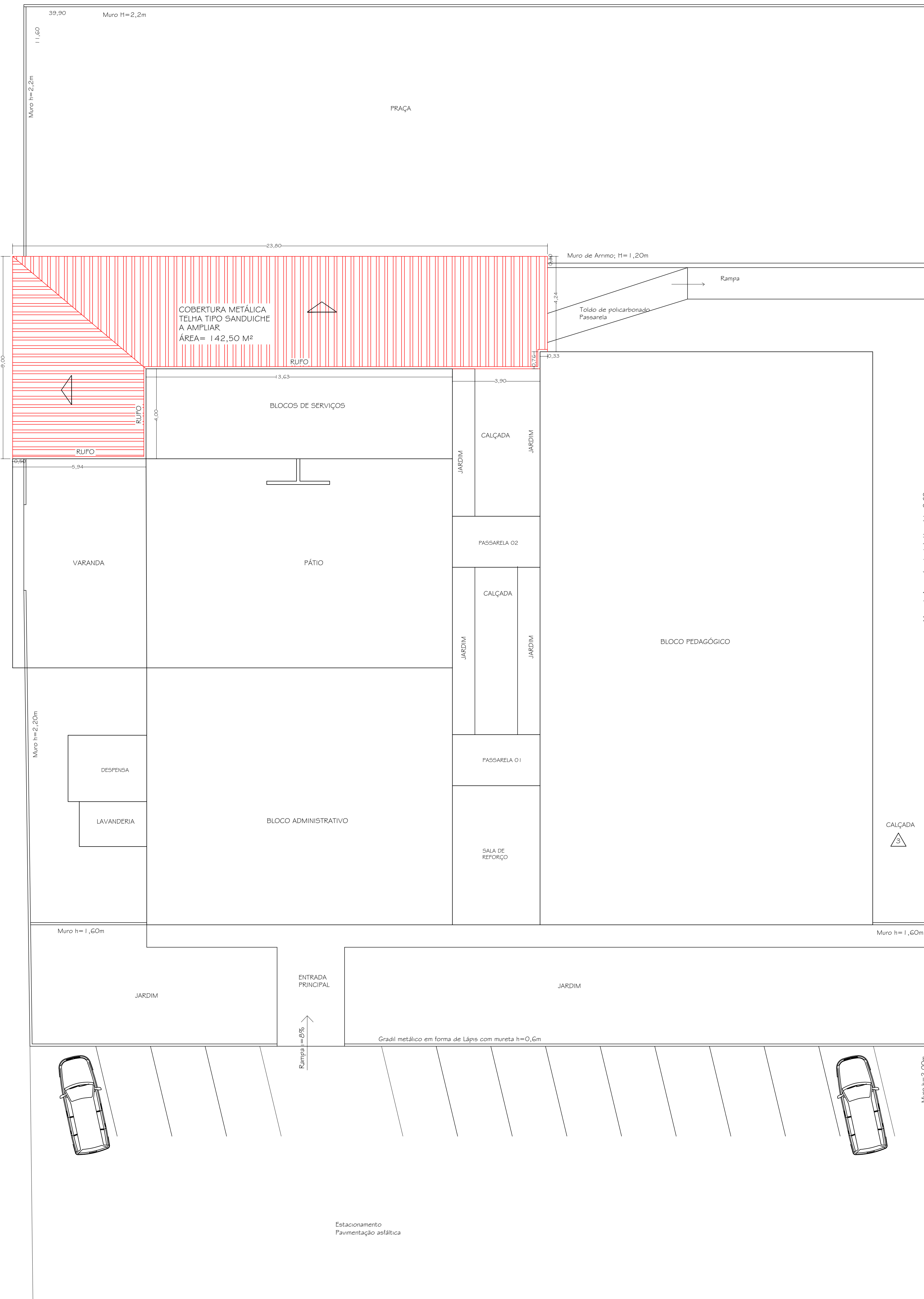
Detalhe das Tesouras  
Metálicas



PLANTA FUNDAÇÕES  
Esc. 1:100

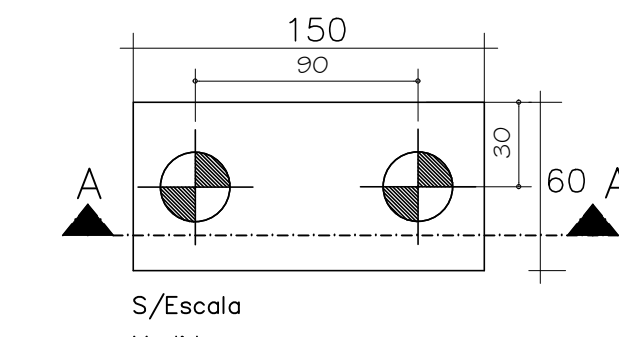


PLANTA ESTRUTURA  
ESC. 1:100

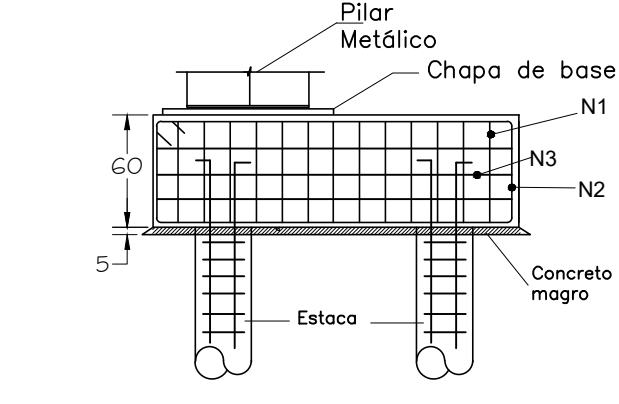


IMPLANTAÇÃO  
ESC. 1:100

BL - BLOCOS DE CONCRETO  
DIMENSÕES DE (150X60X60) cm

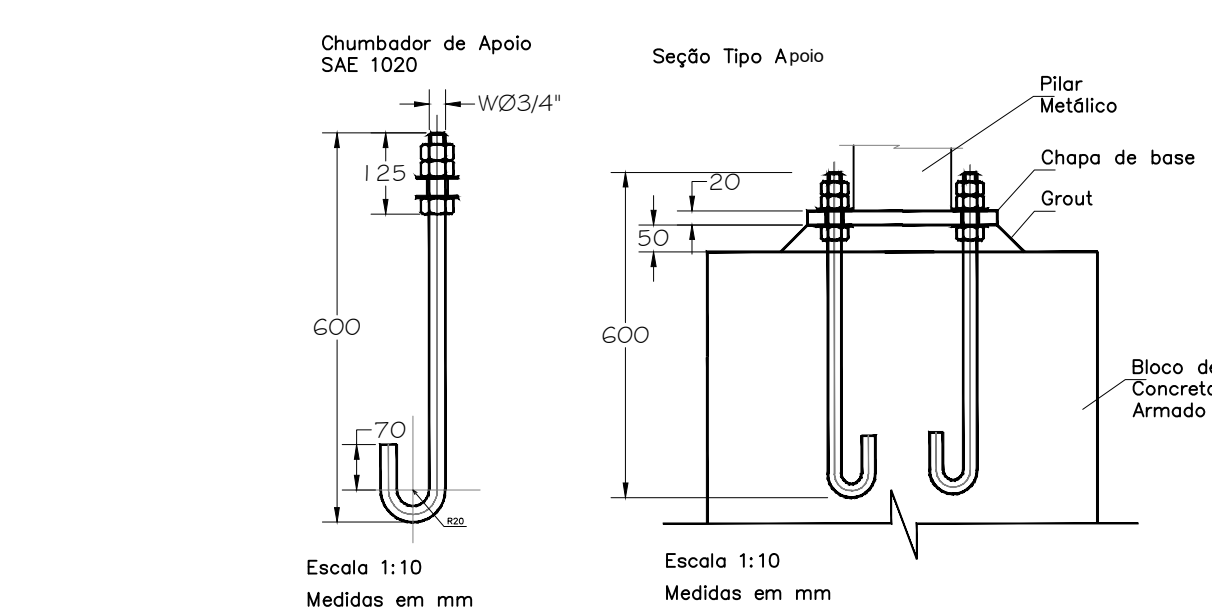
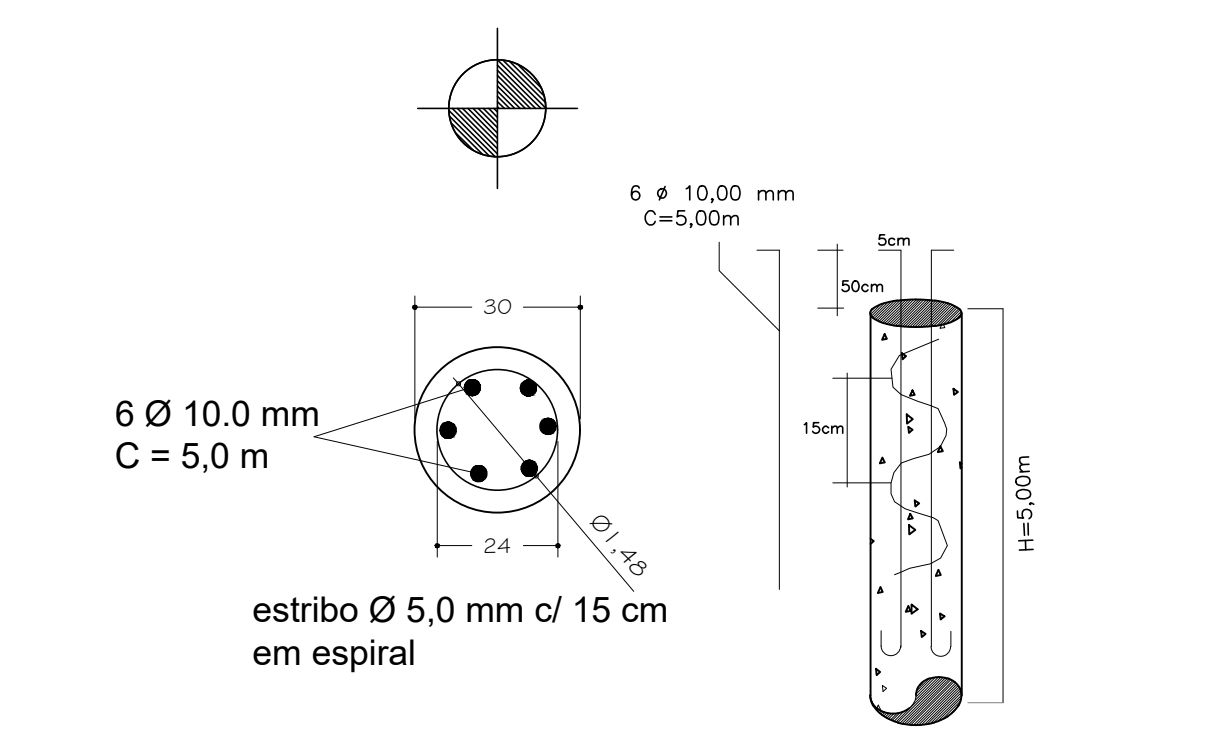


S/Escola  
Medidas em cm



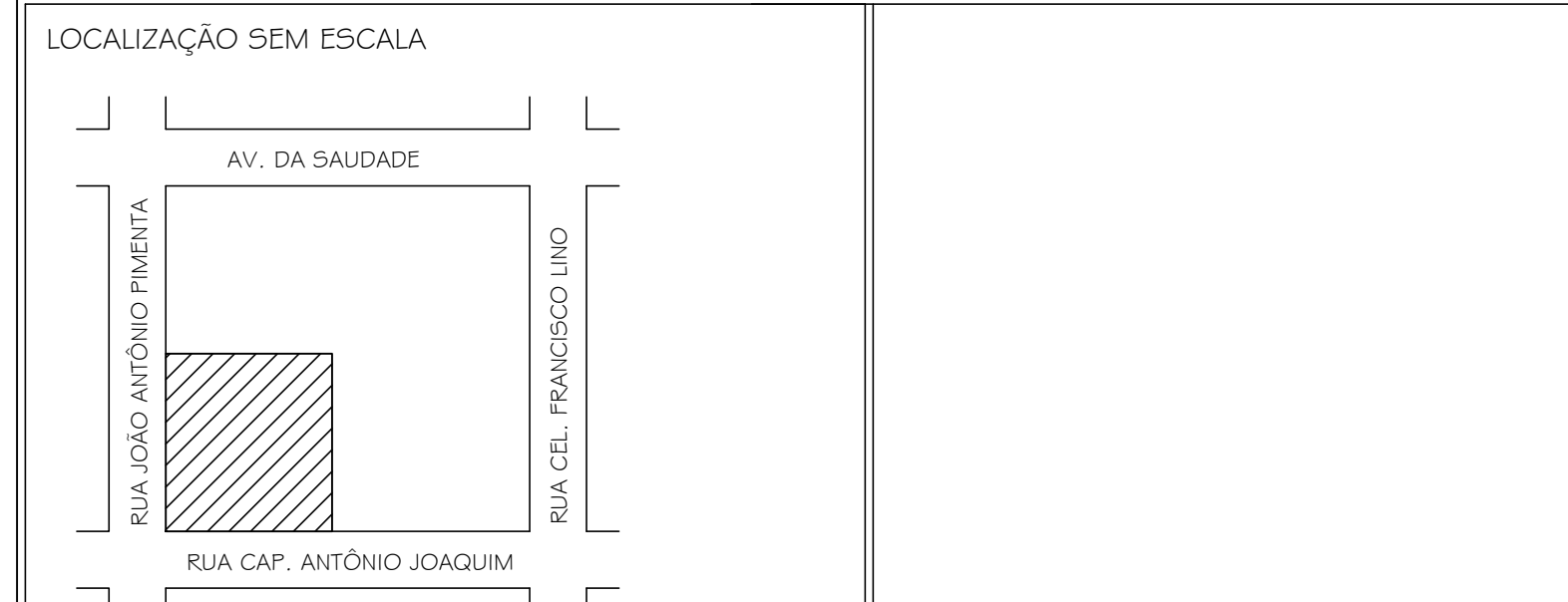
CORTE AA

E - ESTACAS ARMADAS EM ESPIRAL  
Ø 30 cm - prof. = 5,00m



OBJETO: PROJETO BÁSICO

OBJETO: REFORMA DE ESCOLA  
LOCAL: EMEB DR. REALINO JACINTO MENDONÇA  
RUA CAP. ANTÔNIO JOAQUIM, 179 CENTRO  
CIDADE: JERIKUARA - SP.  
PROPRIETÁRIO: PREFEITURA MUNICIPAL DE JERIKUARA - SP.



ÁREAS  
COBERTURA METÁLICA  
A CONSTRUIR 142,50 M<sup>2</sup>  
EDER LUIZ CARVALHO GONÇALVES  
PREFEITO MUNICIPAL  
DANIELA DO CARMO M. PINHEIRO  
CREA n.º 506071453-1  
Eng.ª Civil - Responsável Técnica